

First Annual North Carolina Assessment Conference

May 27, 2005 | 8:30—3:30 pm

Workshop Schedule

- 8:30—9:00** REGISTRATION
- 9:00—10:00** WELCOME, INTRODUCTIONS, AND KEYNOTE ADDRESS
DR. HOPE WILLIAMS & EPHRAIM SCHECTER
- 10:15—12:00** ASSESSING GENERAL EDUCATION PROGRAMS
EPHRAIM SCHECTER
----- OR -----
USING COURSE-BASED DATA FOR ACADEMIC PROGRAM ASSESSMENT
DR. JONI SPURLIN, NC STATE UNIVERSITY
----- OR -----
USING RUBRICS IN UNDERGRADUATE EDUCATION
DEBBIE DRISCOLL, LYNCHBURG COLLEGE
- 12:00—1:00** LUNCHEON AND ROUNDTABLE DISCUSSION
***SELECTED BY PARTICIPANT EMAILS**
- 1:00—2:45** ASSESSMENT IN STUDENT AFFAIRS
DR. TINA HOGAN, APPALACHIAN STATE UNIVERSITY
----- OR -----
VALUE-ADDED ASSESSMENT
ROBERT SPRINGER AND LIBBY JOYCE, ELON UNIVERSITY
----- OR -----
ASSESSING STUDENT GROWTH AND LEARNING OUTCOMES
ROSS GRIFFITH, WAKE FOREST UNIVERSITY
- 3:00—3:30** WRAP-UP / CLOSING REMARKS

Workshop Registration

REGISTER EARLY!
Before May 20, \$50
After May 20, \$60



Workshop registration includes continental breakfast, complete workshop materials, and lunch.

Prefix (Dr., Mr., Ms., etc.): _____

First Name
(as it will appear on name badge): _____

Last Name: _____

Discipline or Administrative Area: _____

Title: _____

CONTACT INFORMATION

Institution: _____

Address: _____

City: _____ State: _____ Zip: _____

Phone: () _____

E-mail: _____

Check if you would like a vegetarian lunch.

Please send registration form and payment to:

Frances Dempsey,
NCICU
879-A Washington St.
Raleigh, NC 27605
Phone: 919-832-5817
E-mail: info@ncicu.org

North Carolina
INDEPENDENT
Colleges & Universities

Great Expectations :

Commitment to Quality Assessment

First Annual Assessment Conference



Assessment Coordinators, Faculty, Institutional Researchers, Student Life Professionals and anyone interested in institutional effectiveness are encouraged to come for a one-day assessment conference.

Hosted By:
Elon University
May 27, 2005
8:30—3:30

KEYNOTE SPEAKER

Keynote: The Top Ten Ways to Sabotage an Assessment Program

Dr. Ephraim Schechter
Consultant, HigherEdAssessment.com

Dr. Schechter recently retired as University Director of Assessment at North Carolina State University and currently serves as consultant to NC State and other universities. He has been involved in college and university outcomes assessment for many years and has presented numerous workshops at national and regional assessment conferences. He directed the assessment components of NC State's recent SACS reaffirmation, and maintains the well-known meta-list Internet Resources for Higher Education Outcomes Assessment at <http://www2.acs.ncsu.edu/UPA/assmt/resource.htm>. He has been a faculty member in experimental psychology, directed an academic program, and served as an institutional researcher and assessment director.



DIRECTIONS TO ELON UNIVERSITY



- ◆ Take Interstate 85/40 to Exit 140 (University Drive). From southbound I-85/40, exit right and turn right. From northbound I-85/40, exit right and turn left.
- ◆ At fourth light, turn right onto Highway 70.
- ◆ Turn left at second light (Williamson Avenue).
- ◆ Drive 1.6 miles into town of Elon.
- ◆ Turn right onto Haggard Ave.
- ◆ Turn left at second light (North O'Kelly Avenue).
- ◆ Visitor parking is on the left.

For an Elon campus map, visit:

http://www.elon.edu/e-net/docs/elon_campus_map.pdf

CONFERENCE ABSTRACTS:

Assessing General Education Programs

Presenter: Dr. Ephraim Schechter, Consultant, HigherEdAssessment.com

Abstract: How can you assess student learning outcomes that cut across degree programs and don't "belong" to individual academic departments? This session suggests approaches for different types of general education programs. We'll look at resources and examples, and participants will be able to share experiences and brainstorm new approaches for their own campuses

Assessment in Student Affairs: Current Practices and Future Hopes

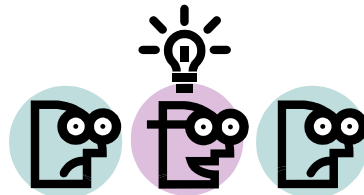
Presenter: Dr. Tina Hogan, Assistant Director, Student Life and Learning Research, Appalachian State University

Abstract: This session will focus on current assessment efforts within the Division of Student Development at Appalachian State University, as well as where we hope to go with our assessment efforts in student affairs. Information will be shared about how we are currently assessing various areas in our division, including residence life, involvement in co-curricular activities, and Greek life. We will review instruments currently used on many campuses and discuss their utility. In addition, we will discuss struggles with the movement toward assessing learning outcomes in student affairs and helping departments develop intentional assessment plans.

Rubrics: Versatile Tools to Implement Chickering and Gamson's Seven Principles for Good Practice in Undergraduate Education

Presenter: Debbie Driscoll, Assistant Vice President for Institutional Effectiveness, Planning, and Assessment, Lynchburg College

Abstract: A good rubric is a professor's (and assessment director's!) best friend. It identifies the essential learning components of an assignment or task and clarifies good performance for each of those components. Rubrics provide an easy way to monitor student progress on each learning component, enriching assessment in the classroom. Workshop participants will learn about and examine different types of rubrics for utility and support of a classroom where the 7 Principles are foundational to instructional decisions.



How to use Course-based Data for Academic Program Assessment

Presenter: Dr. Joni E. Spurlin, University Director of Assessment, Associate Director, University Planning and Analysis, NC State University

Abstract: This hands-on workshop will show faculty how to develop course-based assessments that address course outcomes, program outcomes, and programmatic/institutional accreditation criteria. The participants will develop a course assessment plan that ties to program assessment outcomes. The workshop participants will examine examples of assessment methods from a variety of disciplines and critique these methods. Relationship of program curriculum to program assessment will also be addressed.

Value-Added Assessment Workshop

Presenter: Robert Springer, Director, Institutional Research, Elon University and Libby Joyce Assistant Director, Institutional Research, Elon University

Abstract: With increasing emphasis on assessment from SACS and other accreditation bodies, and with the need for higher education to show the worth/value of its programs, value added assessment is gaining momentum. The question of "why do value added assessment?" is not asked (as the benefits are numerous), but rather "how do you conduct value added assessment?" Using Austin's I-E-O model, we intend to note our challenges and experiences, while presenting useful information in a workshop-style format.

Assessing the Growth of Students and Learning Outcomes

Presenter: Ross Griffith, Director, Institutional Research, Wake Forest University

Abstract: To understand whether or not they are living up to their institutional mission, college administrators continually ask if students are acquiring the skills and developing in ways that will ensure their success after graduation. College administrators and faculty who do not seek to ensure the proper development of students jeopardize the long-term success of those who come to the institution to learn. Additionally, many accrediting associations including the Southern Association of Colleges and Schools (SACS) require this process. Fortunately, measures can be developed to assess the growth and learning of students. In this workshop, you will learn to:

- ◆ Utilize measures to understand the academic and other needs of students;
- ◆ Devise solutions for maximizing the opportunities for students to learn and grow;
- ◆ Respond to standards of "Institutional Effectiveness as required by SACS.